



VARRIO HAWAIIAN GARDENS

Impact of the Gang Injunction on Crime in Hawaiian Gardens

Lakewood Sheriff's Station

Topics

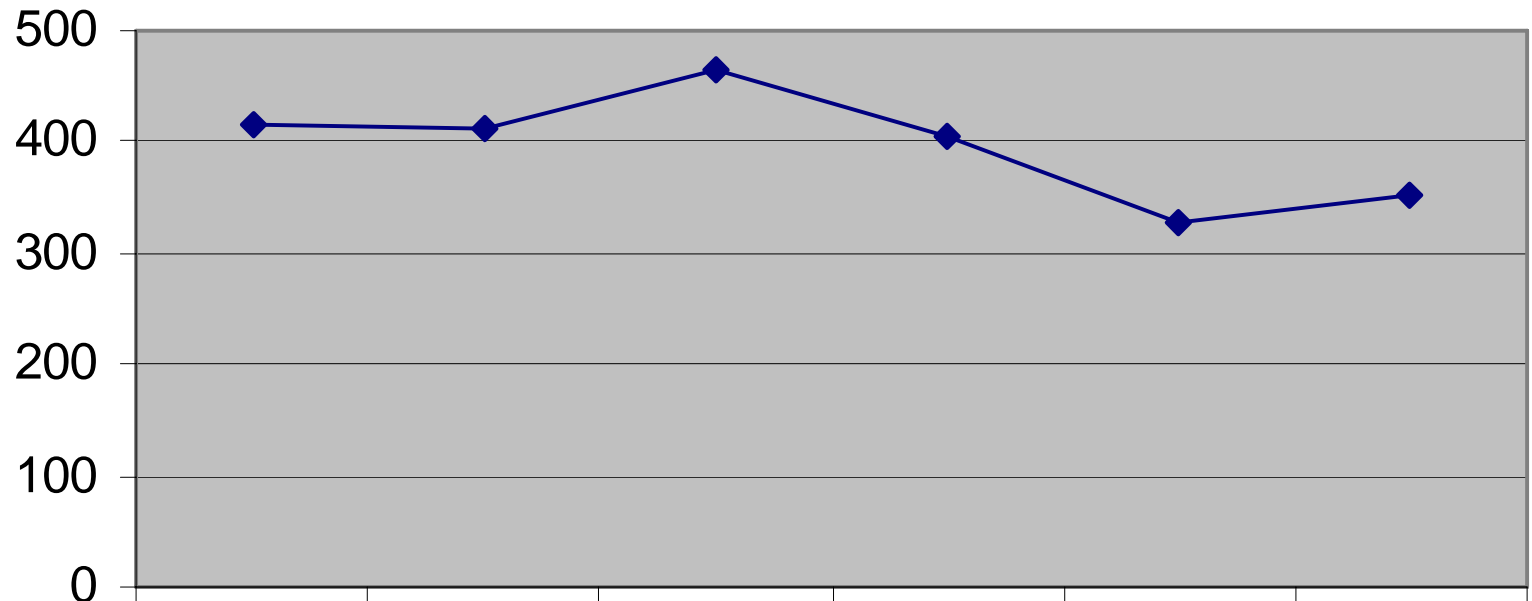
- **Overview of Crime Statistics**
- **Commendation & Complaint Procedure**
- **Immigration Law / I.C.E., DUI Checkpoints and Search Warrants**
- **Overview of the Civil Gang Injunction**
- **Gang Injunction Statistics**
- **Crime Rate during the Injunction**
- **Community Involvement during the Gang Injunction**

Overview of Crime Statistics

7/19/2008

3

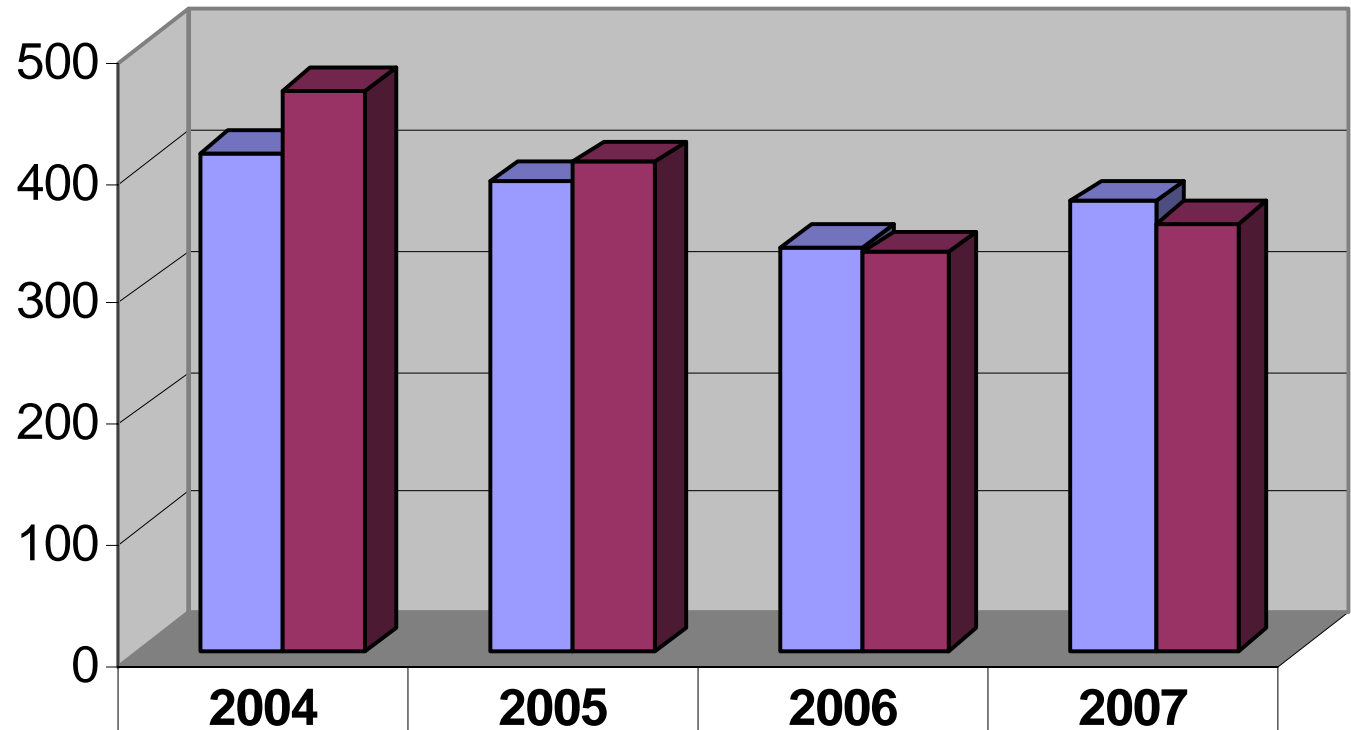
Hawaiian Gardens Crime Rate per 10,000 Population



	2002	2003	2004	2005	2006	2007
◆ Crime Rate	416	411	464	404	329	353

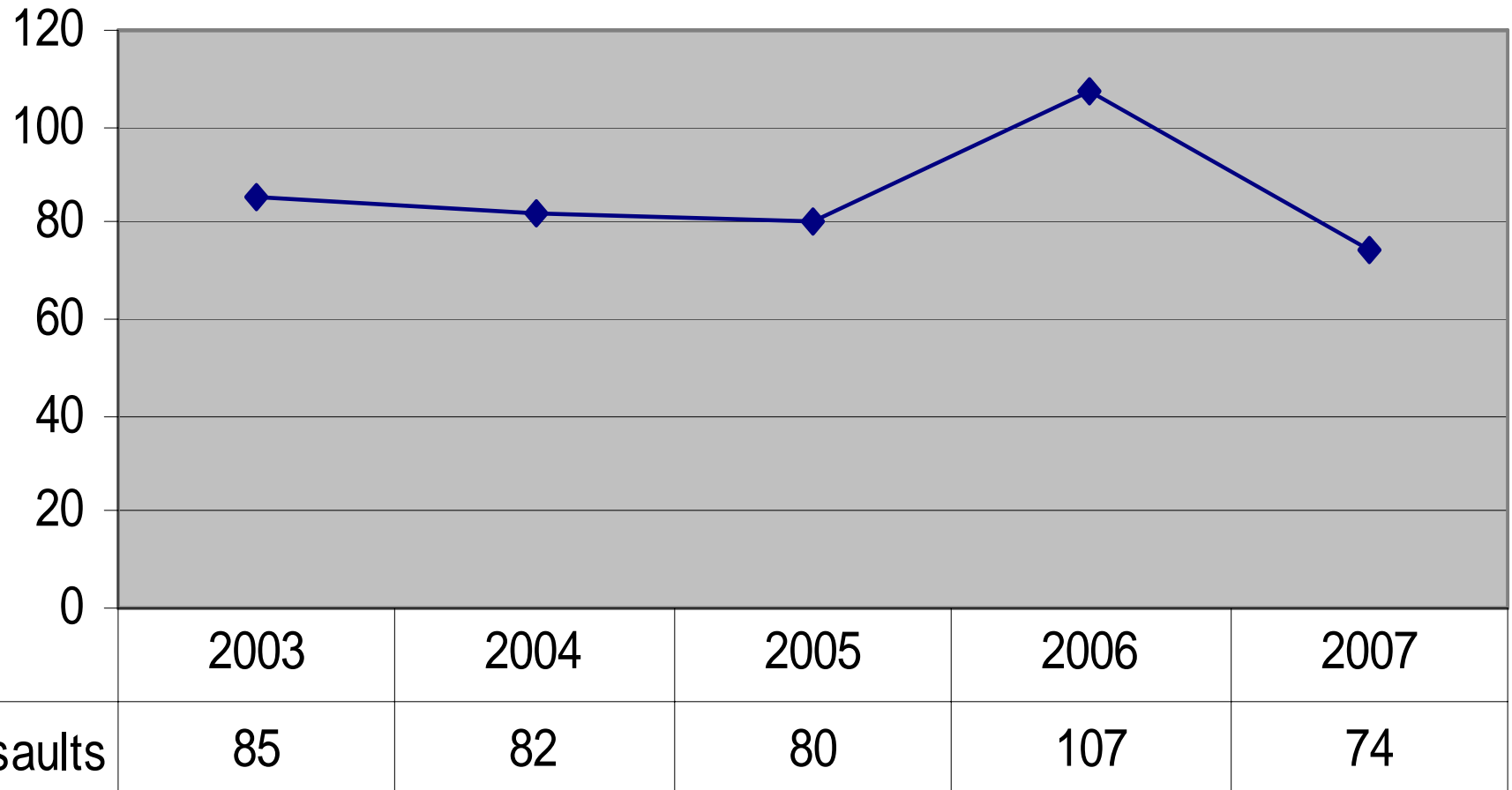
Hawaiian Gardens crime rate shown as the number of crimes committed per 10,000 people.

Below is a comparison of the crime rate of Hawaiian Gardens to the average crime rate of the Total Area serviced by Lakewood Station:



■ Total Area	412	388	334	372
■ Hawaiian Gardens	464	404	329	353

Hawaiian Gardens Aggravated Assaults



From January 1, 2008 to June 1, 2008, the overall crime rate has decreased **16%**

The rate of assaults compared to this same time period last year shows a decrease of **43%**

30 incidents in 2007 to
17 incidents in 2008.

Commendation and Complaint Procedure

7/19/2008

The Los Angeles County Sheriff's Department prides itself on the quality of service it provides the residents of Los Angeles County. If you feel the Department has not met your expectations by offering a high quality of service, you are encouraged to contact the Sheriff's Department to relay your concerns.

All California Police agencies have a procedure for investigating complaints about individual officers. For incidents involving Sheriff's Dept. personnel or procedures, call the Lakewood Station Watch Commander at (562) 623-3500, 24 hours a day. Complaints can also be made to Sheriff's Headquarters at (323) 267-4800 or by mail.

You can also file a commendation or complaint against a deputy online at www.LASD.org. Click on the “Contact Us” link.

Make sure to include all relevant information including your first and last name. A supervisor will contact you in order to obtain further information in order to resolve an issue or complaint.

- ***Immigration Law and Procedures***
- ***DUI Checkpoints***
- ***Search Warrant Procedures***

Immigration Law

The Sheriff's Dept. does not actively enforce immigration law. An Immigration Agent assigned to the County Jail screens inmates for possible immigration violations.

If I.C.E. conducts an operation in our jurisdiction, we provide logistical support in a mutual aid capacity upon request.

Ultimately I.C.E. is responsible for the arrest and prosecution of individuals they detain for immigration violations.

D.U.I. Checkpoints

- DUI checkpoints are conducted by police agencies countywide
- They are funded by the California State Office of Traffic Safety
- To ensure safety on the roadways, deputies/officers also check for driver's licenses and proof of insurance
- Pursuant to 22651(p) CVC, vehicles driven by unlicensed drivers may be impounded

Search Warrants

Search warrants are legal documents that demonstrate probable cause to search a location for suspects and/or evidence.

They are reviewed and signed by a Judge of the Superior Court.

Search Warrants continued

Deputies serving the search warrant will provide the resident with two documents:

1. Copy of the signed search warrant
2. Itemized receipt of property seized

Overview of the Gang Injunction

7/19/2008

17

Civil Gang Injunction

A gang injunction is a court order issued from civil court aimed at a criminal street gang designed to eliminate the public nuisance caused by the gang in a designated "Safety Zone."

On March 7, 2008, the Court issued a permanent injunction against the criminal street gang Varrio Hawaiian Gardens and all of its members which will be enforced in the “Safety Zone.”

Having been identified as a public nuisance because of their criminal and nuisance activities, members of the Varrio Hawaiian Gardens gang, affiliates and/or associates acting for the benefit of the gang are prohibited from certain activities upon service of the gang injunction order.

Injunction Restrictions

- **Section (a) Do Not Associate in public with any known gang member, affiliate, and/or associate**
- **Section (b) Do Not Intimidate or harass any victim, witness, or informant of any criminal activity**
- **Section (c) Do Not Ride Bicycles unless going to/from school, school activity, work, or involved in a legitimate emergency**
- **Section (d) Stay Away From Weapons**
- **Section (e) Stay Away From Drugs**
- **Section (f) Stay Away From Alcohol while in a place accessible to the public**

Restrictions continued

- **Section (g) Obey Curfew unless going to/from school, school activity, work, or involved in a legitimate emergency**
 - If under 18 years of age - do not be in a public place between 8 PM and 5 AM
 - If over 18 years of age - do not be in a public place between 10 PM and 5 AM
- **Section (h) Do Not Vandalize or Possess Vandalism/Graffiti Tools**
- **Section (i) Do Not Trespass**
- **Section (j) Do Not Block Access of any public right of way**
- **Section (k) Do Not Loiter in a public place**
- **Section (l) Obey All Laws**

Frequently Asked Questions

- **Q - Who can get served?**
- **A - Any person who has been identified as a VHG gang member, or any person acting in association with gang members for the benefit of VHG gang (for example, spray painting VHG graffiti in a public place).**

Q - What areas are affected by the injunction?

A - Any area accessible to the public that falls within the designated “Safety Zone”?

FAQs continued

Q - What do I do after I've been served?

A - Those who have been served must abide by all the rules set forth in the service including not engaging in any activity set forth in the prohibitions.

Q - How long will the injunction last?

A - The Court issued the gang injunction as a *permanent* order.

FAQs continued

Q - What will happen if I violate a condition of the gang injunction?

A - The Sheriff's Department is committed to protecting the residents of Hawaiian Gardens by reducing all gang activity. Those found in violation of the gang injunction order will be arrested and charged with a crime.

**Q - I think I've been wrongly served.
What can I do?**

A – For questions concerning service of the injunction, contact Sergeant Charles Calderaro of the Operation Safe Streets unit at Lakewood Station (562) 623-3500. Questions about the criminal prosecution or civil procedure regarding the injunction can be directed to Deputy District Attorney Deanne Castorena at (909) 868-5479

Gang Injunction Statistics

Conviction Rate, Number Served,
Case Load

Number of Gang Members/Associates
Served with Injunction

(as of June 30, 2008): **147**

Number of Gang Members/Associates
Arrested for Violation of the Injunction

(as of June 30, 2008): **72**

Conviction Rate of Those Charged with
Injunction Violation: **99%**

Since July 2005, 95 Varrio Hawaiian Gardens Gang Members Have Been Convicted of a Crime.

Of Those, 70 Gang Members Received a State Prison Sentence.

There Are Approximately 30 Gang Members Currently Awaiting Gang Injunction and Other Criminal Case Trials.

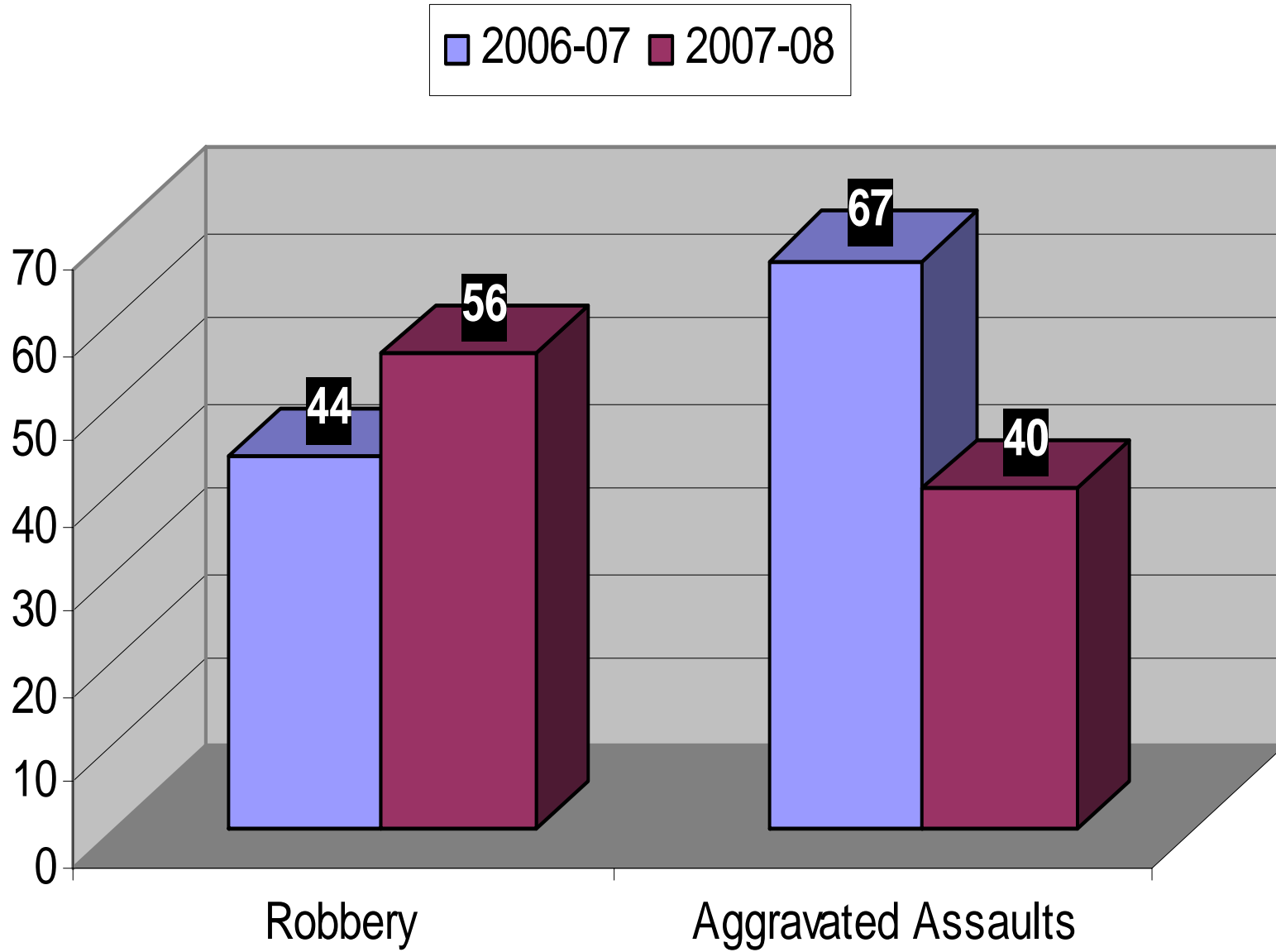
Review of Crime Rate During Gang Injunction

**Period of September 21, 2007 to
June 30, 2008**

**Compared to Same Period One
Year Prior**

2006-07 2007-08





Members of the criminal street gang Varrio Hawaiian Gardens have primarily been responsible for the majority of murders, robberies, assaults, and other crimes in the City of Hawaiian Gardens.

For years, gang members have run rampant in the streets without impunity. They have fostered an atmosphere of fear and intimidation in the community showing no regard for public safety.



MAR 14 2008

Handwritten graffiti on a concrete sidewalk, including the words "RATS" and "SOUS".

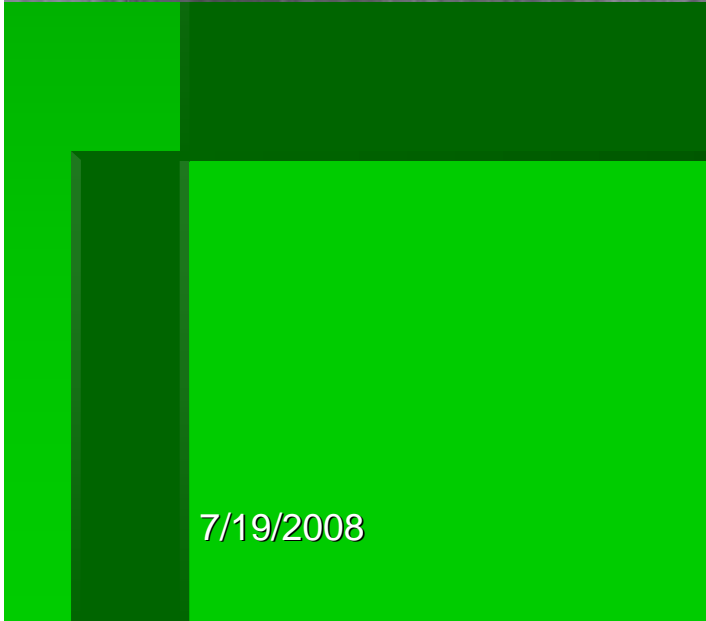
MAR 12 2008



FEB 27 2008



FEB 27 2008



7/19/2008

Community Involvement and Response During the Gang Injunction

Neighborhood Watch, C.E.R.T.,
HG/School District Task Force

It is the Mission of the Los Angeles County Sheriff's Department to partner with the people it serves to secure and promote safety in our communities. In keeping with the goal to rid our neighborhoods of fear and crime, the Sheriff's Department and the City of Hawaiian Gardens are committed to fairly enforcing the gang injunction. It is important for everyone to understand that our intent is to rid the City of all gang activity and to prevent any further tragedies or loss of life caused by senseless criminal gang activity.

Neighborhood Watch Program

- Participation in Neighborhood Watch meetings is at all time high.
- Confidence from community in knowing when gang activity is reported, deputies will respond and take appropriate action
- Increased feeling of safety compared to same period last year
- Positive comments, especially toward gang injunction
- Increase in reported crimes demonstrates an improved partnership with the community

Community Emergency Response Team

- C.E.R.T. Training provided by Sheriff's Dept.
- Trains community members in emergency response to natural catastrophes
- Sheriff's Dept. and community members collaborated to have this training for HG residents
- Demonstrates a Community pride in the direction the City is headed

HG/School District Task Force

- Comprised of School District Officials, Teachers, Principals, Civic Leaders, Sheriff's Deputies
- Plan and implement community programs such as Parent Empowerment Symposium
- Discuss gang and violence intervention strategies
- Deputies conduct "Gang Awareness" presentations in English and Spanish to parents of elementary school children

Overview

- The Gang Injunction has proven to be a useful tool in reducing gang crime
- Statistics show overall crime rate has fallen
- The majority of residents in the City have commented favorably
- The City, Sheriff's Department, and School District have dedicated themselves to providing a safe environment for the community and for "Our Youth...Our Future"

Thank You

