



CITY OF HAWAIIAN GARDENS
DEPARTMENT OF COMMUNITY DEVELOPMENT
BUILDING AND SAFETY DIVISION
**ACCESSIBILITY DETAILS FOR
OBSTRUCTIONS AND REACH RANGES**

INFORMATION
BULLETIN
A-006

Effective: 6-15-12
Revised:
Sheet 1 of 3

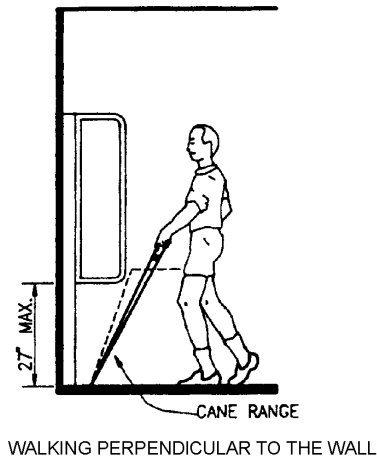
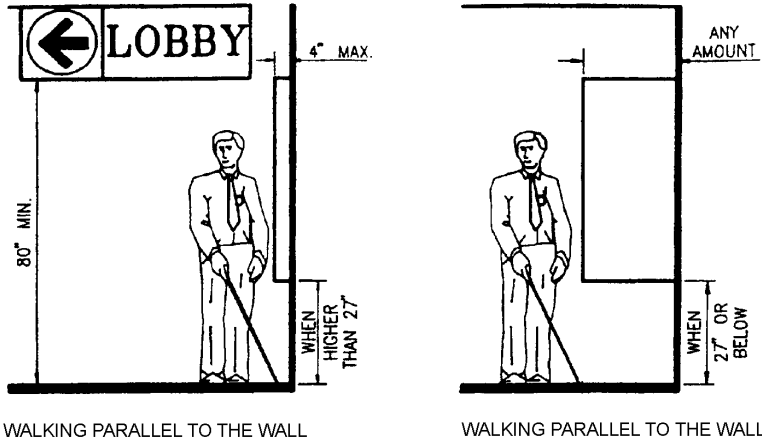


FIGURE 11B -7A -PROTRUDING OBJECTS

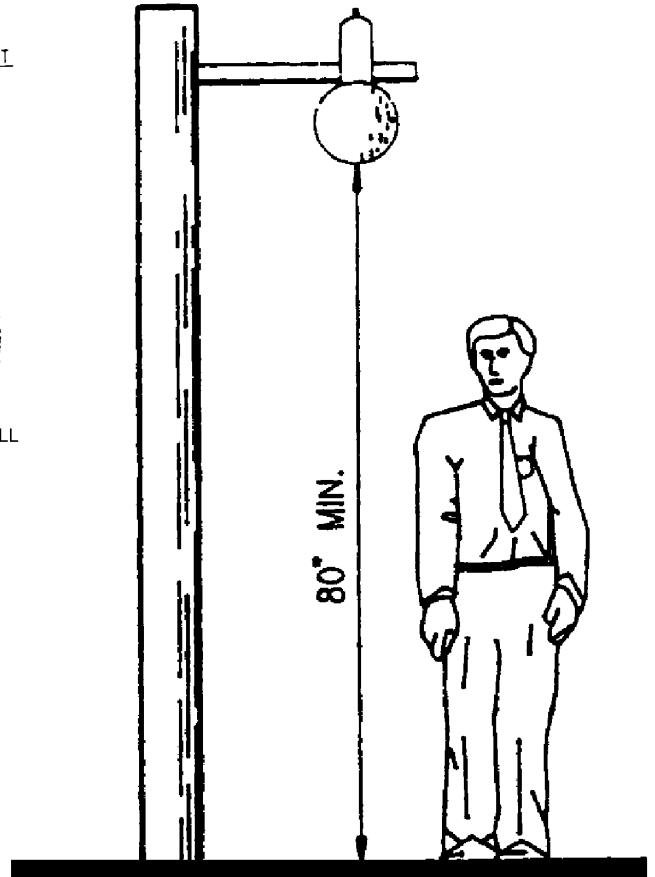
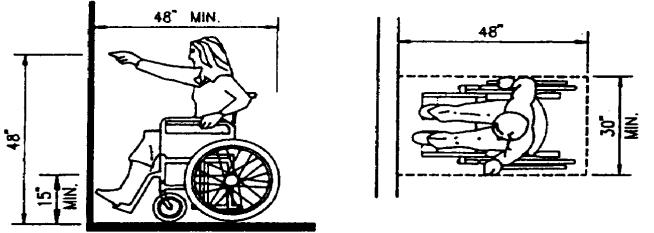


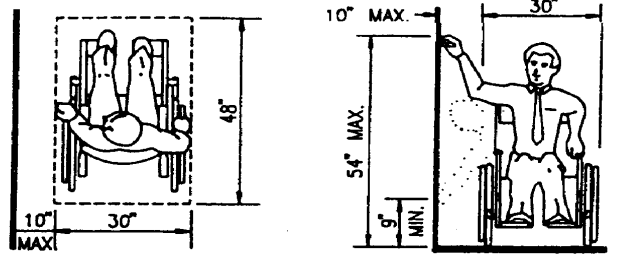
FIGURE 11B -28 -OVERHANGING OBSTRUCTION

REACH RANGE

THESE DIAGRAMS ILLUSTRATE THE SPECIFIC REQUIREMENTS OF THESE REGULATIONS AND ARE INTENDED ONLY AS AN AID FOR BUILDING DESIGN AND CONSTRUCTION.

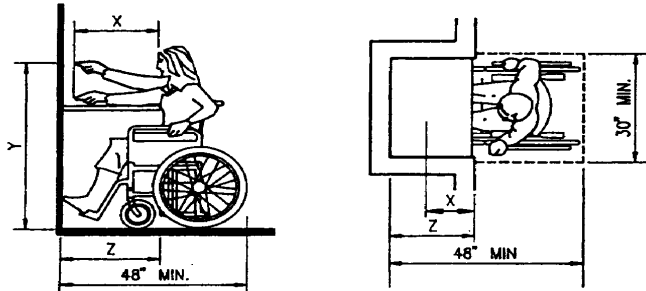


(a) HIGH FORWARD REACH LIMIT



(a) CLEAR FLOOR SPACE PARALLEL APPROACH

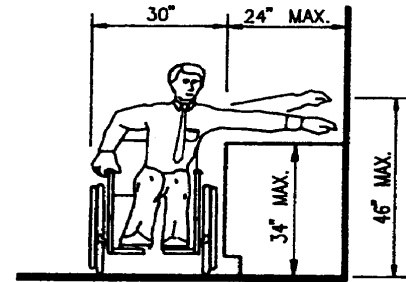
(b) HIGH AND LOW SIDE REACH LIMITS



Note: "X" shall be less than or equal to 25". "Z" shall be greater than or equal to "X". When "X" is less than 20", then "Y" shall be 48" max. When "X" is 20" to 25", then "Y" shall be 44" max.

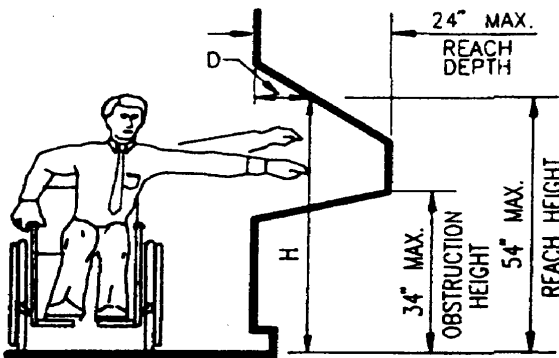
(b) MAXIMUM FORWARD REACH OVER AN OBSTRUCTION

FIGURE 11B -5C -FORWARD REACH



(c) MAXIMUM SIDE REACH OVER OBSTRUCTION

FIGURE 11B -5D -SIDE REACH



(d) ATM REACH RANGE LIMITS

CORRESPONDING REACH HEIGHTS FOR GIVEN DEPTHS:

WHEN D = 10"	OR LESS,	H = 54" MAX.
WHEN D = 11"		H = 53.5" MAX.
WHEN D = 12"		H = 53.0" MAX.
WHEN D = 13"		H = 52.5" MAX.
WHEN D = 14"		H = 51.5" MAX.
WHEN D = 15"		H = 51.0" MAX.
WHEN D = 16"		H = 50.5" MAX.
WHEN D = 17"		H = 50.0" MAX.
WHEN D = 18"		H = 49.5" MAX.
WHEN D = 19"		H = 49.0" MAX.
WHEN D = 20"		H = 48.5" MAX.
WHEN D = 21"		H = 47.5" MAX.
WHEN D = 22"		H = 47.0" MAX.
WHEN D = 23"		H = 46.5" MAX.
WHEN D = 24"		H = 46.0" MAX.

FIGURE 11B -5F -ATM REACH RANGE LIMIT

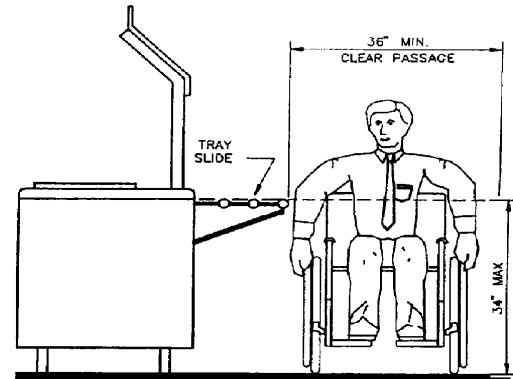


FIGURE 11B-16 -FOOD SERVICE LINES

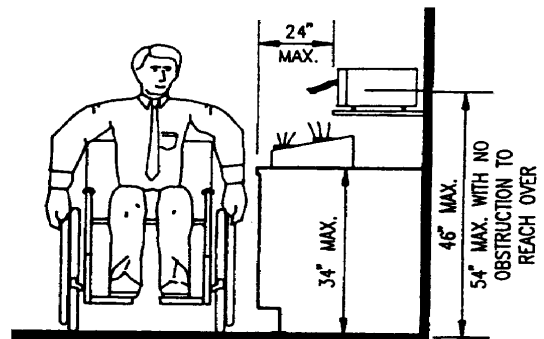
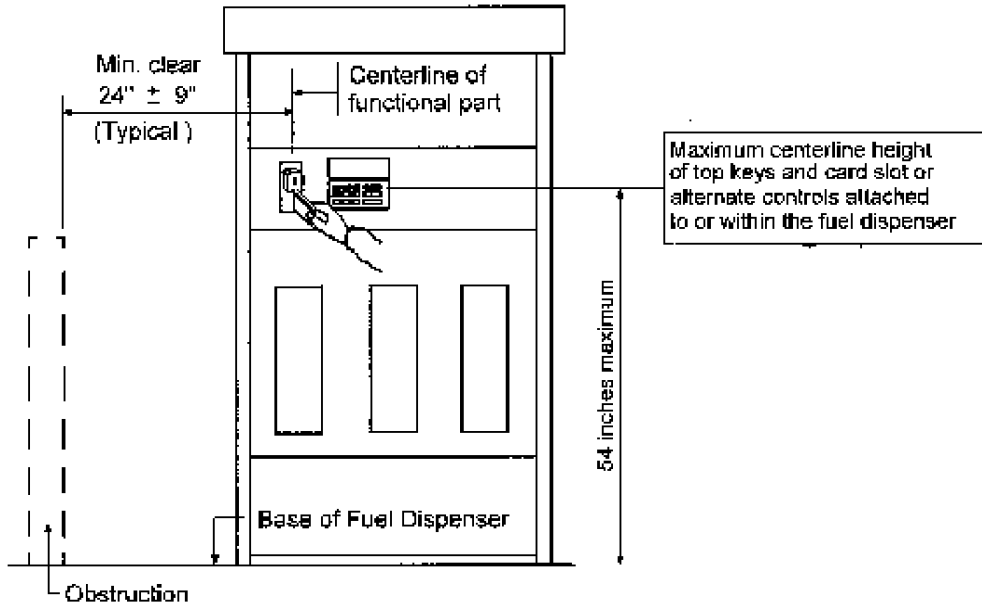
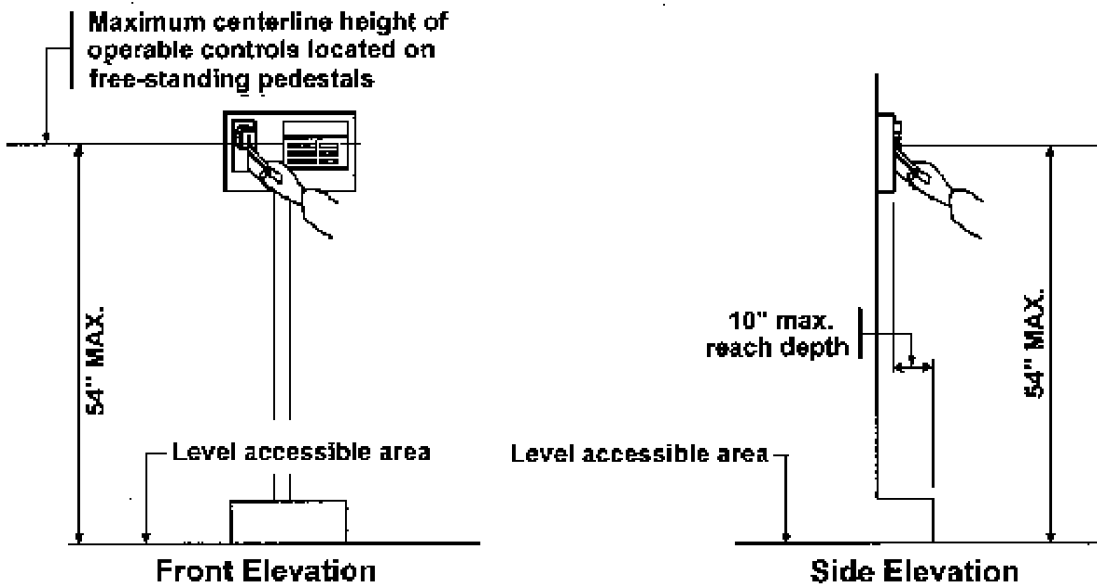


FIGURE 11B -17 -TABLEWARE AREAS

CARD READER THESE DIAGRAMS ILLUSTRATE THE SPECIFIC REQUIREMENTS OF THESE REGULATIONS AND ARE INTENDED ONLY AS AN AID FOR BUILDING DESIGN AND CONSTRUCTION.



**CARD READERS MOUNTED IN FUEL DISPENSERS
FIGURE 11C-1**



**CARD READERS LOCATED ON FREE-STANDING PEDESTALS
FIGURE 11C-2**