

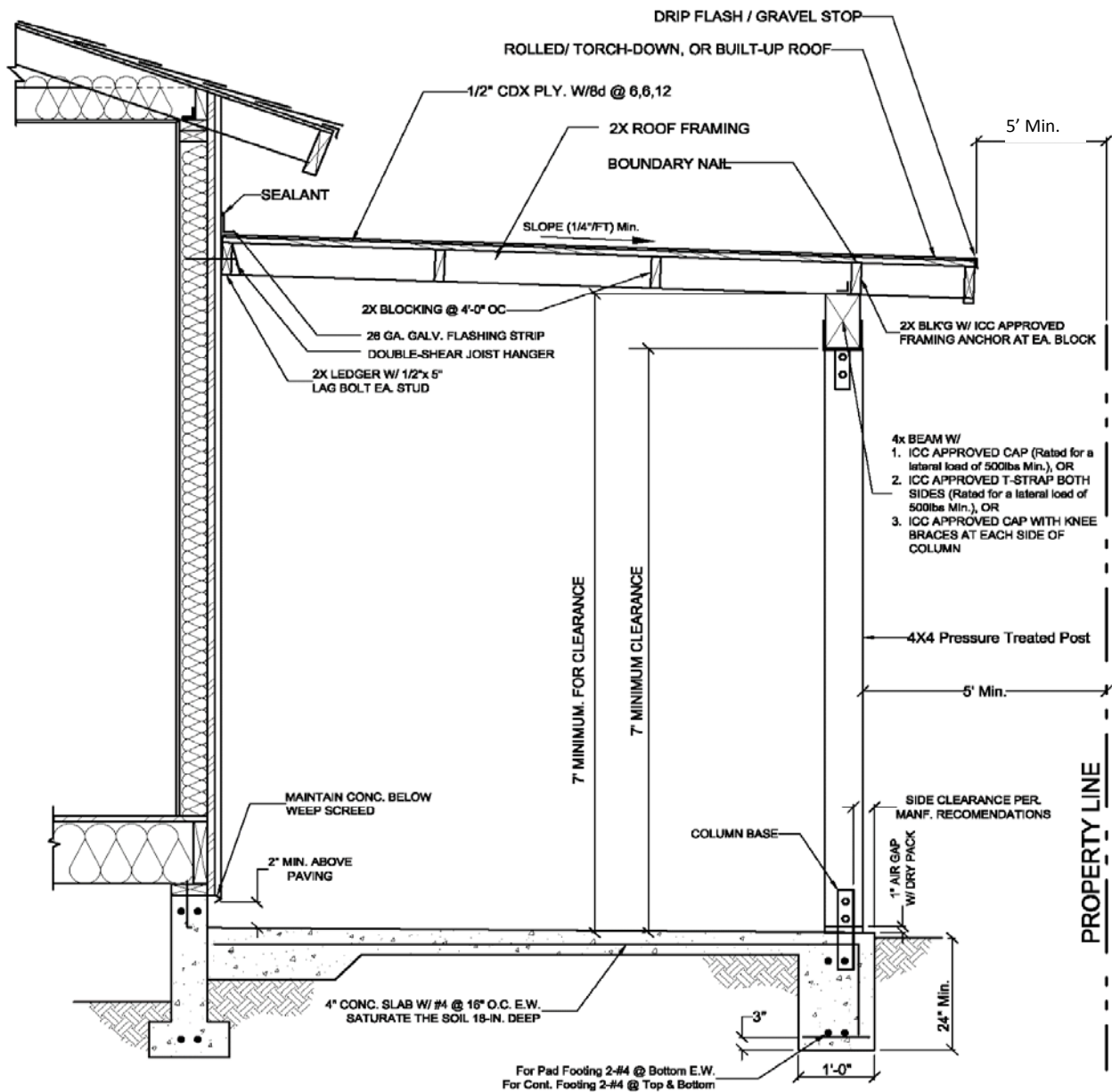


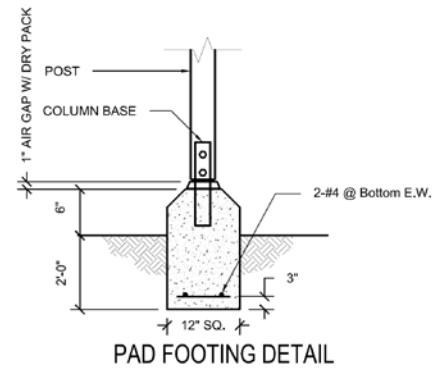
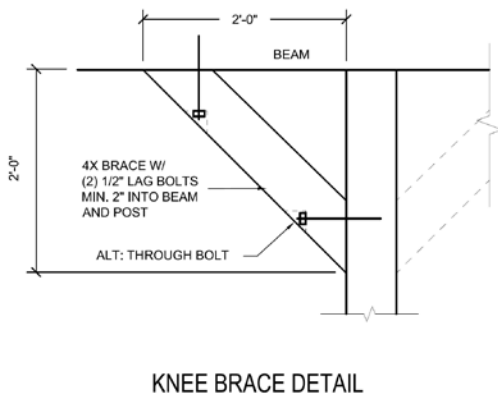
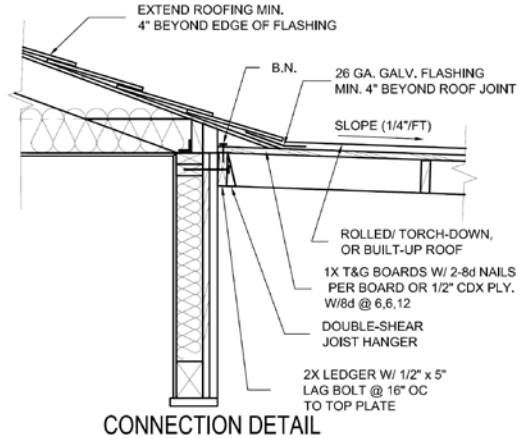
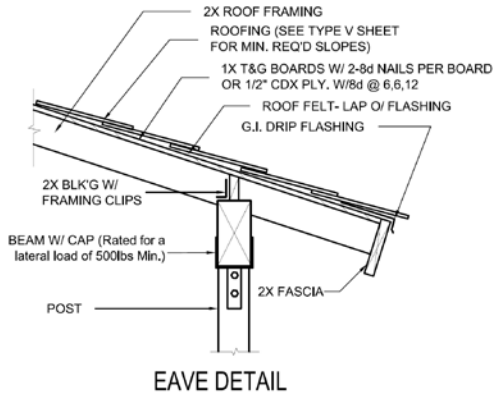
CITY OF HAWAIIAN GARDENS
 DEPARTMENT OF COMMUNITY
 DEVELOPMENT
 BUILDING AND SAFETY DIVISION
 21815 Pioneer Boulevard
 Hawaiian Gardens, Ca 90716
 (562) 420 2641

B-001

EFFECTIVE :
 1-05-2015

ATTACHED PATIO COVER / CARPORT





ALLOWABLE SPANS FOR DF #1 HEADERS	
Maximum span of tributary load 20'-0"	
SPAN	BEAM SIZE
Up to 4'-0"	4X4
4'-1" to 6'-0"	4X6
6'-1" to 8'-0"	4X8
8'-1" to 10'-10"	4X10
10'-0" to 12'-0"	4X12*

ALLOWABLE SPANS FOR DF #2 ROOF RAFTERS			ALLOWABLE SPANS FOR DF #2 CEILING JOISTS		
Light Dead Load (up to 15 psf)/ Max. Roofing Load: 6 psf (Asphalt Shingles) Live Load: 20 psf			Dead Load 5 psf/ Live Load 10 psf		
RAFTER SIZE	SPACING	ALLOWABLE SPAN	JOIST SIZE	SPACING	ALLOWABLE SPAN
2X6	24"	10'-10"	2X4	24"	9'-10"
	16"	13'-3"		16"	11'-13"
	12"	14'-11"		12"	12'-5"
2X8	24"	13'-0"	2X6	24"	14'-10"
	16"	16'-11"		16"	17'-8"
	12"	15'-6"		12"	19'-6"
2X10	24"	16'-11"	2X8	24"	18'-9"
	16"	20'-9"		16"	23'-0"
	12"	23'-11"		12"	25'-8"
2X12	24"	19'-7"	2X10	24"	22'-11"
	16"	24'-0"		16"	26'-0"
	12"	25'-0"		12"	26'-0"

* 4X12 DF No. 1 may be used for a 16'-0" garage opening in one-story patio or carport structures.

Type V Construction is a classification of buildings by construction materials and methods. It is the least restrictive permitted by the Los Angeles County Building Code and includes light wood-frame construction. This sheet is for information and reference only and is not a substitute for accurate drawings prepared for the proposed construction project.